

EXPLORE OUR

Holiday Homes & Lodges

2025 RANGE

stand
apart



VICTORY
LEISURE HOMES

Contents

	MESSAGE FROM GARY	3
	WHY CHOOSE VICTORY	4
	BUYERS GUIDE	5
HOLIDAY HOMES	KAHLO	6 - 9
	LAKESWOOD	10 - 13
	RIVERWOOD	14 - 17
	DAVENPORT	18 - 21
	BOWER	22 - 25
	LOCHWOOD	26 - 29
	BRONTE	30 - 33
	STONEWOOD	34 - 37
	BAYWOOD	38 - 41
	SILVERWOOD	42 - 45
LODGES	ASHBERRY	46 - 49
	FRANKLIN	50 - 53
	PARKVIEW	54 - 57
	FARADAY	58 - 61
	HIGHCROFT	62 - 65
PODS	LIBERTE	66 - 69
	LUMIERE	70 - 71
	VICTORY FAMILY & SHOWGROUNDS	72
	TECHNICAL SPECS	73
	ECO OPTIONS	74
	WARRANTY	75

victoryleisurehomes.co.uk

WELCOME TO OUR 2025 collection



“

At Victory, we know that holiday homes can be better. We get up every day to make that a reality. That’s why we’re thrilled to introduce two brand new homes, the Liberte and Ashberry, and refresh some of our favourites. We think you’ll love them.

First, we have the Liberte, our new starter lodge which showcases our interior design expertise without breaking your budget. We also have the Ashberry, our new holiday home, which is designed to help you make treasured holiday memories for generations. We’ve also given the Riverwood and Faraday a makeover – we’d love to know what you think.

“Whatever the adventure, our collection of holiday homes and lodges have been created to give you a true feeling of a home away from home. Spaces that are made to be shared with your family (the dog included) and friends for generations to come.

“I hope you enjoy looking through this season’s collection and if you’d like to find out more, visit our website or follow us on social media.”

~
Gary Corlyon
Managing Director at Victory Leisure Homes

Novus

The holiday home manufacturing process has been the same for decades. It has a reputation for being slow and 'behind the times'. Until now. Until Novus

Inside our homes, you'll see and feel Novus throughout every aspect of the build and design. Experience...

- A true home from home feel with no plastic joins on the walls
- More space and contemporary interiors
- No bouncing floors and more solid walls with less noise pollution between rooms
- Energy efficiency like never before

CEILING
Tongue & groove panelling for a truly domestic look

Looks more like a home

ROOF
Structurally graded trusses with grade B snow loading

Can hold up to **150kg** of snow³

WALLS
Beadless walls with structural I-beams for improved thermal efficiency and a true home-from-home feel

85% improved thermal efficiency¹

FLOORS
Fully bonded and insulated - removing bounce and reduced thermal bridging

Up to **100%** thermal efficiency²

1 - Based on current BS3632 Residential Specification
2 - At wallboard joints
3 - Per square metre

Buyers Guide

HOW TO BUY YOUR VICTORY

Dreamed of owning a holiday home or lodge but don't know where to start?
Our guide covers from budgets to beach views, and pricing to pitch size.

STEP 1



Find your dream location

Visit your holiday park in person to discuss features, prices and experience the on-site facilities.

STEP 2



Choose your dream home

Take a look at our range online, download a brochure, or visit our showgrounds in East Yorkshire.

STEP 3



Pick your dream pitch

You'll need to consider the size of your pitch, your view, parking, and how close you are to the facilities.

STEP 4



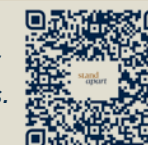
Place your order

Place your order with one of our trusted parks or dealerships and we'll start hand-crafting your home in our factory.

Before you make a decision, do your research to make sure your budget matches what you need and want.

Need help choosing?

Book a tour of our showgrounds and meet our expert team who can answer all your questions.



THE Kahlo



Launched last year, the Kahlo allows you to experience a truly exceptional getaway like never before, featuring a groundbreaking addition to our collection – the striking mono pitch roof.

 1 Layout  2 Bedrooms  Sleeps 6

The Kahlo is the epitome of luxury and style. With exceptional design and a standout exterior, it creates a lasting impression. The spacious interior provides ample storage and comfortable bedrooms, ensuring a tranquil stay.





Indulge in the luxury bath with a rainfall shower and enjoy modern amenities such as blackout curtains, USB plugs, and smart TV space. The Kahlo leaves no compromises, offering a truly unforgettable holiday experience for you, the family and your friends.

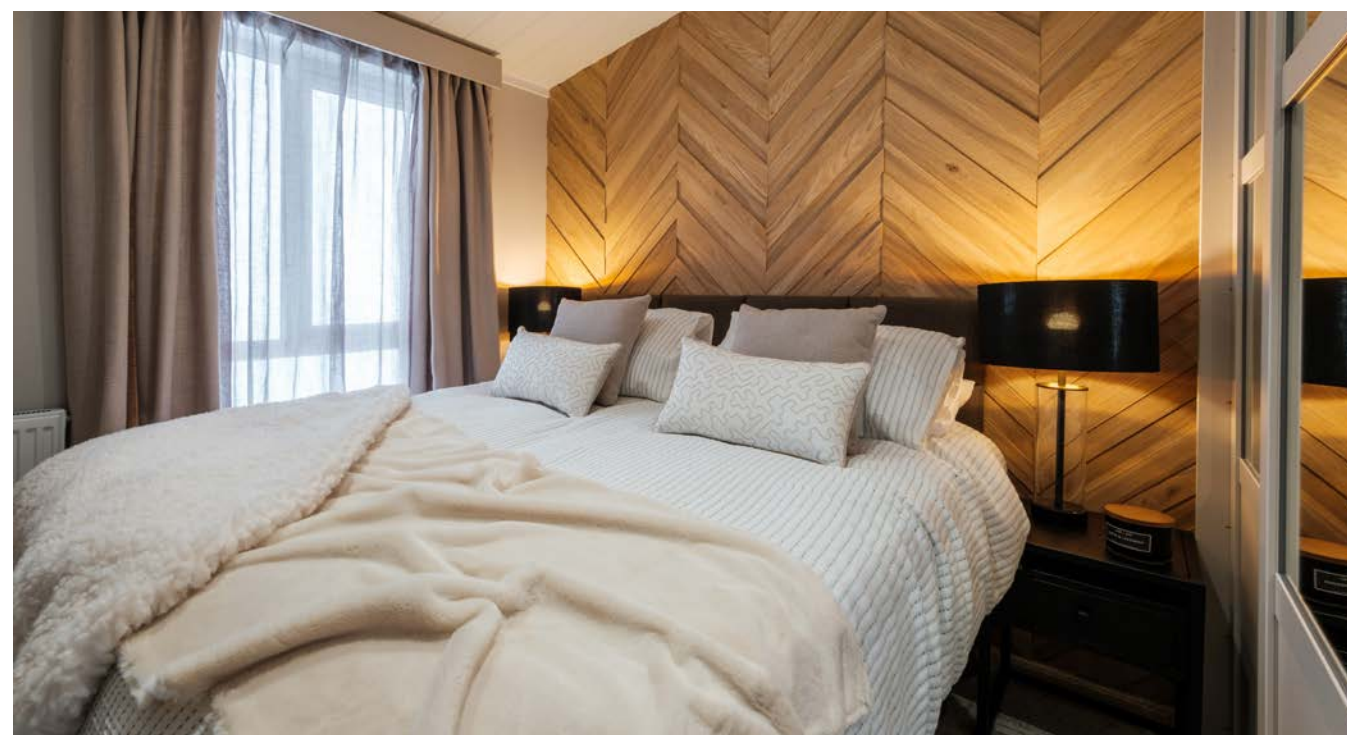
The layout



44ft x 14ft, 2 Bedrooms (Residential Specification)



Shows optional office to replace guest bedroom



Key features

- ✓ Mono-pitch roof for striking presence
- ✓ Open plan kitchen, dining and living area
- ✓ Optional office or twin beds to guest bedroom
- ✓ Luxurious master suite
- ✓ Bath with rainfall shower
- ✓ Freestanding furniture throughout

Scan the QR code
to explore the *Kahlo*



THE Lakewood



A firm favourite in our range, the Lakewood is designed to bring your favourite people together.

 2 Layouts  2-3 Bedrooms  Sleeps 6-8

With a refreshed look last season, including new fabrics, a feature fireplace with a modern slat wall, customisable seating options, upgraded dining area, and a unique hallway feature wall, the Lakewood pairs luxury with contemporary design touches. There's a reason the Lakewood remains our flagship model...

Unpack, relax, and let the Lakewood transport you to your dream holiday.





The layouts

42ft x 14ft, 2 Bedrooms (Residential Specification)



43ft x 14ft, 3 Bedrooms (Residential Specification)



Key features

- ✓ Customisable seating options
- ✓ Fully integrated appliances
- ✓ Luxurious master suite with walk-in-wardrobe
- ✓ Feature fireplace
- ✓ Freestanding lounge and dining furniture
- ✓ Available in BS3632 Residential Specification

Scan the QR code
to explore the *Lakewood*



THE Riverwood



If you're looking to holiday in style, look no further than the Riverwood.

 2 Layouts  2-3 Bedrooms  Sleeps 6-8

With a boutique, luxury feel, the Riverwood lounge showcases standout interior design features like wall panelling, an on-trend kitchen design, and comfy fabric sofas. The twin bedroom is known for its spacious design and calming textures. The master bedroom features a dressing area and ensuite so you can get ready in style.

Need help choosing?

Book a tour of our showgrounds to see, touch and feel our homes.



Available in two- or three-bedroom options, there's plenty of space for additional family members or guests. It's time to staycation in style.

The layouts

40ft x 14ft, 2 Bedrooms (Residential Specification)



41ft x 14ft, 3 Bedrooms (Residential Specification)



Photography shows the 3-bed model.

Key features

- ✓ Contemporary freestanding lounge furniture
- ✓ Integrated kitchen appliances
- ✓ Two- or three-bedroom models available
- ✓ Available in BS3632 Residential Specification
- ✓ Lots of natural light

Scan the QR code
to explore the *Riverwood*



THE Davenport



Timeless and stylish, the Davenport is a relaxing sanctuary waiting to be enjoyed.

 2 Layouts  2-3 Bedrooms  Sleeps 6-8

New for 2025, the Davenport exudes a warm, inviting charm with its warm textures and comfy lounge seating. It features a spacious kitchen with rich espresso tones, perfect for your next culinary adventures and gatherings.

The relaxing master bedroom provides a serene retreat, ensuring restful nights and peaceful mornings.





Whether you're entertaining guests or unwinding with family, the Davenport offers a cosy, luxurious escape. Weekend escapes were made to be spent in the Davenport.

The layouts

40ft x 14ft, 2 Bedrooms (Residential Specification)



41ft x 14ft, 3 Bedrooms (Residential Specification)



Key features

- ✓ Contemporary freestanding lounge furniture
- ✓ Integrated kitchen appliances
- ✓ Two- or three-bedroom models available
- ✓ Available in BS3632 Residential Specification
- ✓ Lots of natural light
- ✓ Rich, calming colour scheme

Scan the QR code
to explore the *Davenport*



THE Bower



The Bower has been designed with families in mind and has all the room you need to make treasured memories that will last a lifetime.

 2 Layouts  2-3 Bedrooms  Sleeps 6-8

The modern, on trend design has been created so you can add your own finishing touches. It's also easy-clean, so you don't need to worry about sandy feet (or paws) or sticky fingers. You'll also be spoilt for storage throughout.

There's plenty of space to cook up the finest family meals – we've even made room for a highchair in the dining area so everyone can enjoy their holiday.



Alternative fabric sofa available

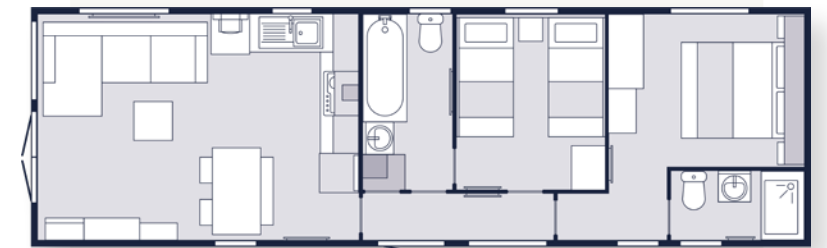


With sockets in the perfect place (for baby monitors or hairdryers), and a large family seating area, you won't want to come home.

Park up, tuck your suitcases away, and relax – your perfect family holiday starts in the Bower.

The layouts

40ft x 12ft, 2 Bedrooms



41ft x 12ft, 3 Bedrooms



Key features

- ✓ Plenty of storage space
- ✓ Dim-out curtains and blinds
- ✓ Bath to main bathroom
- ✓ Stylish interiors and on-trend features
- ✓ Easy clean fabrics and furnishings
- ✓ Fabric sofa available

Scan the QR code
to explore the *Bower*



THE Lochwood



Fresh from its makeover last year, the Lochwood has all the features you know and love. If you're looking for stylish living with clever, space-saving design, the Lochwood has everything you need.

 2 Layouts  2-3 Bedrooms  Sleeps 6-8

Designed for families who are looking for a contemporary yet functional space, the Lochwood is perfect for hosting and relaxing. The Lochwood boasts a comfy L-shaped sofa - which is perfect for movie nights - as well as a master bedroom with an ensuite. With a unique galley kitchen and plenty of worktop space, you can cook up a storm while the family make the most of the spacious lounge.

Need help choosing?

Book a tour of our showgrounds to see, touch and feel our homes.





Experience the charm of the Lochwood – a perfect blend of functional features and cosy, contemporary interior design.

The layouts

38ft x 12ft, 2 Bedrooms



41ft x 12ft, 3 Bedrooms



Key features

- ✓ Unique galley kitchen
- ✓ Large L-shaped sofa
- ✓ Dining area with storage bench
- ✓ Light, airy interior design
- ✓ Available in a two or three bed model
- ✓ Plenty of storage throughout

Scan the QR code
to explore the *Lochwood*



THE Brontë



Discover the Brontë - a brand-new home for 2024 that's perfect for a stylish staycation.

 3 Layouts  2-3 Bedrooms  Sleeps 6-8

With pops of smoke green and powder blue, or dark grey if you opt for the alternative colour scheme, the spacious open plan kitchen and living space is designed for comfort and entertaining.

With two bathrooms, plenty of storage, and enough room for a generational staycation, the Brontë combines style and practicality. Enjoy natural light, optional double sliding doors, branded appliances, and a unique sofa bed in the lounge.

Complete with a cosy fire option and soft-close drawers, the Brontë is a perfect mid-range home that doesn't compromise on quality.





The layouts

35ft x 12ft, 2 Bedrooms



38ft x 12ft, 2 Bedrooms



38ft x 12ft, 3 Bedrooms



Key features

- ✓ Two colour schemes – Smoke Green or Lava Grey
- ✓ Soft close kitchen cupboard doors
- ✓ Spacious open plan living area
- ✓ Large sofa with unique double sofa bed
- ✓ Two- or three-bedroom layouts available
- ✓ Plenty of bedroom storage space

Scan the QR code
to explore the *Brontë*



THE Stonewood



Holiday memories are brought to life in the Stonewood and our interior design team have thought of everything, from storage nooks to worktop space, to make it the perfect base for a staycation.

 6 Layouts  2-3 Bedrooms  Sleeps 6-8

The neutral colour scheme, with pops of ochre and graphite, gives you the chance to bring your favourite finishing touches from home to make it yours. The L-shaped sofa is made for napping or nighttime nibbles, and the bench style dining area gives you room to have a family picnic whatever the weather

Contemporary open storage adds style and practicality to the bedrooms, and the easy to maintain bathroom comes complete with everything you need to enjoy holidaying your way in the Stonewood.





Key features

- ✓ Available in a wide range of layouts
- ✓ L-shaped sofa with plenty of storage
- ✓ Plenty of natural light
- ✓ Neutral wood tones throughout
- ✓ Affordable for family/shared ownership
- ✓ Spacious dressing area to master suite



The layouts

29ft x 12ft, 2 Bedrooms



35ft x 12ft, 2 Bedrooms



36ft x 12ft, 3 Bedrooms



37ft x 12ft, 2 Bedrooms



39ft x 12ft, 2 Bedrooms



41ft x 12ft, 3 Bedrooms



Scan the QR code
to explore the *Stonewood*



THE Baywood



Packed with everything you could possibly need, the Baywood holiday home is perfect for young families and first-time buyers who want to escape the everyday and staycation in style. With a new centre lounge option, an on-trend colour scheme, and plenty of storage and holiday must-haves, the Baywood offers fuss-free family holidays and a lifetime of memories.

 6 Layouts  2-3 Bedrooms  Sleeps 6-8

Families can spend time unwinding and enjoy making memories in the spacious living space, which has been designed to be easily cleaned and toys can be hidden away quickly if guests come over. The vibrant tropical fabrics combined with navy and rust hues add a warming Scandi vibe whilst also being hardwearing, so you don't have to worry about the kid's sticky hands or dog's muddy paws. So pack your board games, stuff your cases, and start your adventure.





Key features

- ✓ Centre lounge option available
- ✓ Lots of natural light
- ✓ Plenty of layouts to choose from
- ✓ L-shaped sofa with lots of storage
- ✓ Neutral interior design
- ✓ Perfect for young families/first-time buyers

The layouts

28ft x 12ft, 2 Bedrooms



32ft x 12ft, 2 Bedrooms



35ft x 12ft, 2 Bedrooms



38ft x 12ft, 2 Bedrooms



39ft x 12ft, 3 Bedrooms



40ft x 12ft, 3 Bedrooms (centre lounge)



Scan the QR code
to explore the *Baywood*



THE Silverwood



Filled with all the essentials you could possibly need, our entry-level Silverwood holiday home is a great choice for young families and first-time buyers looking to escape the everyday.

 4 Layouts  2-3 Bedrooms  Sleeps 6-8

Offering plenty of space combined with a neutral design, the Silverwood provides the perfect backdrop for relaxation. With four layout options, contemporary interior design, and storage for holiday necessities, the Silverwood guarantees fuss-free family holidays and plenty of unforgettable memories.

So pack your favourite your bags and embark on your next staycation adventure.



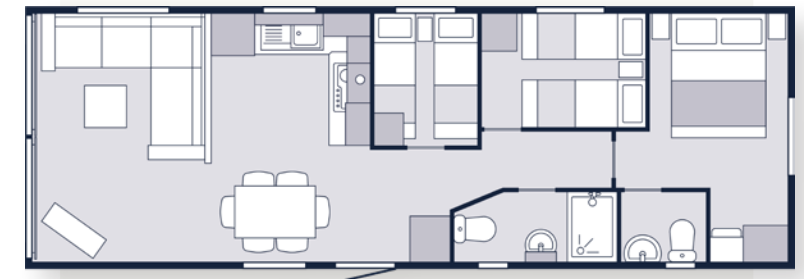


The layouts

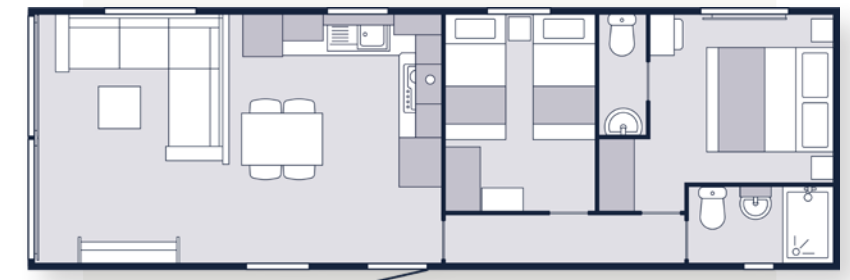
35ft x 12ft, 2 Bedrooms



36ft x 12ft, 3 Bedrooms



38ft x 12ft, 2 Bedrooms



39ft x 12ft, 3 Bedrooms



Key features

- ✓ Available in a wide range of layouts
- ✓ L-shaped sofa with plenty of storage
- ✓ Plenty of kitchen worktop space
- ✓ Large entrance area with cupboard
- ✓ Lots of natural light
- ✓ Natural, warm colour scheme

Scan the QR code
to explore the *Silverwood*



THE Ashberry

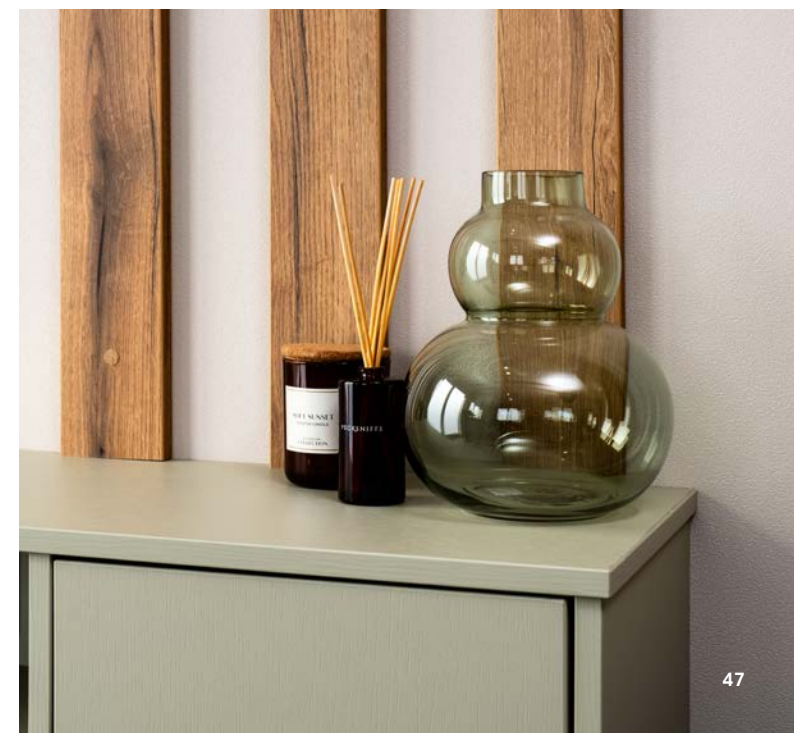


The Ashberry is a home from home with comforting interiors, neutral warm tones and practical storage solutions. With standout features throughout, like the comfortable seating and storage, you won't want to go home.

 2 Layouts  2-3 Bedrooms  Sleeps 6

With sage green hues and warm wood tones, the Ashberry is made for relaxing. As an entry level home, it suits budgets of all shapes and sizes – without compromising on the much-loved Victory design and quality.

Designed as the perfect getaway from the everyday, the Ashberry has a large open plan living area with a sociable dining space, a large master suite with dressing area, and twin bedroom for the kids to catch some all-important zzz's.





The Ashberry is the perfect place to initiate holiday mode.

The layouts

36ft x 12ft, 2 Bedrooms



39ft x 12ft, 3 Bedrooms



Key features

- ✓ Neutral colour scheme with easy-to-clean fabrics
- ✓ The perfect starter holiday home
- ✓ Designed for busy holidaymakers
- ✓ Lots of storage space
- ✓ Sociable living space
- ✓ Various layouts available

Scan the QR code
to explore the *Ashberry*



THE Franklin

LUXURY
STANDARD



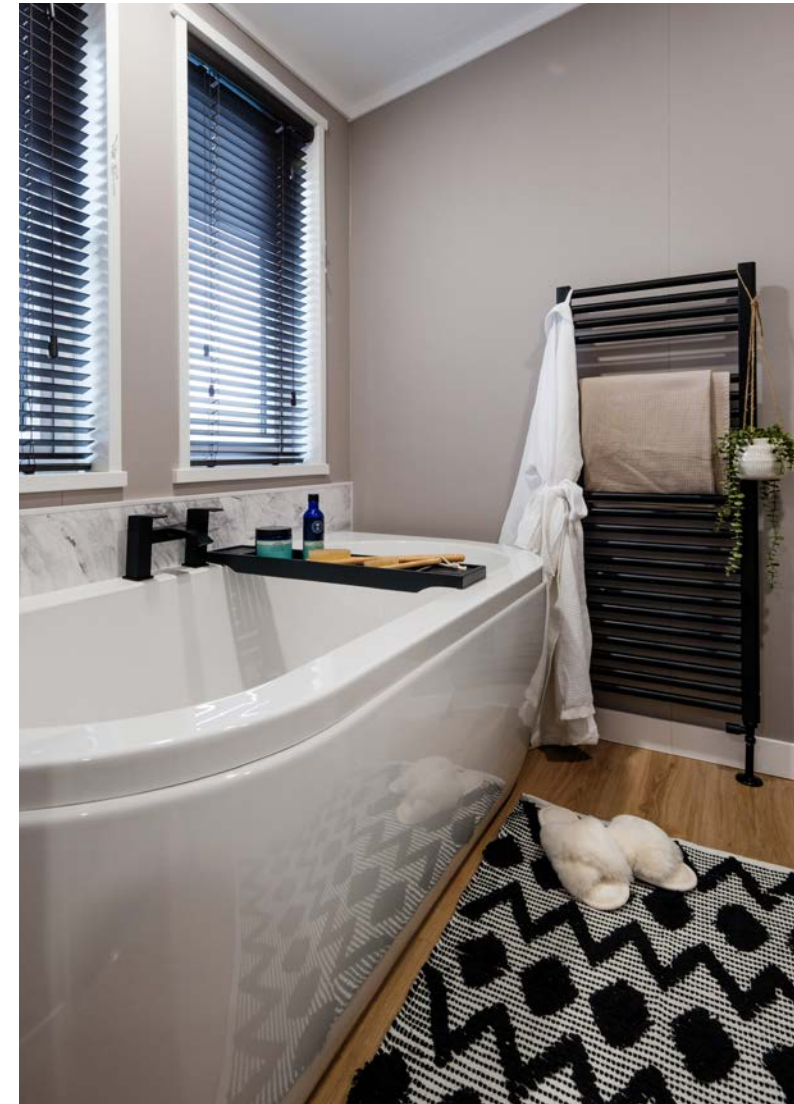
The Franklin has everything you want from a lodge and more. Inspired by the sunset tones of Morocco and earthy, natural textures – there's a lot to love about this contemporary lodge. If you like a room with a view, you'll love the clever use of windows throughout, including the unique bi-fold window to the dining area which offers uncompromising views from every angle – and an inside-outside alfresco option when entertaining.

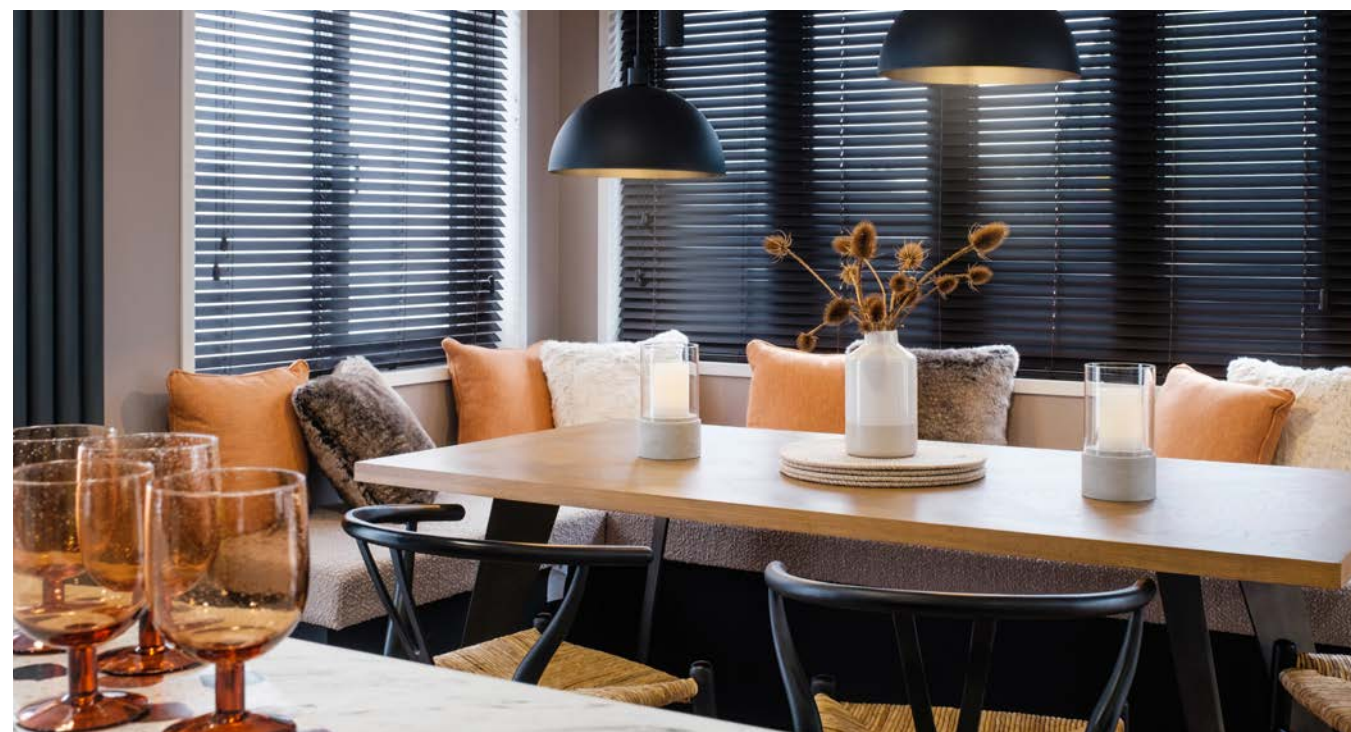
 1 Layout  2 Bedrooms  Sleeps 6

The living area has a feature glass fire and TV unit offering peace and quiet from the world outside and the chance to catch up on your favourite shows.

Need help choosing?

Book a tour of our showgrounds to see, touch and feel our homes.



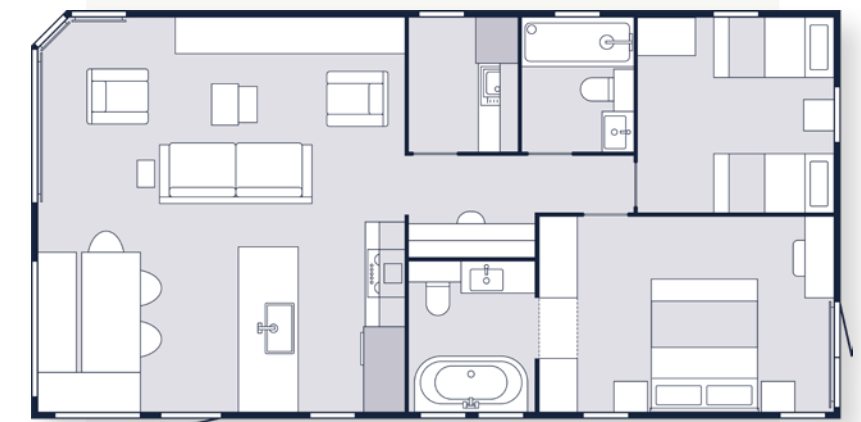


If you love crafting or need space to work, there's the option to create a hobby or office space – or you can simply create a storage room for all your family's bits and pieces.

In the bathrooms, you'll find a bath and shower so you can enjoy whatever you're in the mood for. The Franklin is a luxurious retreat away from the hustle and bustle.

The layout

40ft x 20ft, 2 Bedrooms



Key features

- ✓ Unique bi-fold windows to dining area
- ✓ Desk area to hallway
- ✓ Branded integrated appliances
- ✓ Bath to master ensuite
- ✓ Fully galvanised chassis
- ✓ BS3632 Residential Specification as standard

Scan the QR code
to explore the *Franklin*



THE Parkview

TIMELESS TRADITION WITH A TWIST



Step inside our Parkview lodge to find a space designed just for you. Inspired by a modern farmhouse, the Parkview boasts contemporary design features like marble-style worktops, herringbone flooring and statement feature walls. So, whether you're looking to take a break with family and friends or enjoy some blissful alone time, the Parkview is the lodge for you.

 5 Layouts  2-4 Bedrooms  Sleeps 6-10

We know that real life happens. And the Parkview is ready for anything. You won't experience another lodge like it. We're always looking to push creative boundaries and flip 'traditional' design on its head. Feature walls are completely unique to the Parkview, and we've also used more pendant lighting in this lodge, to give it a modern yet warm feel. A well-equipped utility room is the perfect addition, and the separate dressing area adjacent to the master bedroom is stylish and practical.





Key features

- ✓ Spacious kitchen with larder cupboard
- ✓ Feature fireplace and freestanding furniture
- ✓ Spacious utility room
- ✓ Optional bath to ensuite
- ✓ Fully galvanised chassis
- ✓ BS3632 Residential Specification as standard

LODGE

The layouts

37ft x 20ft, 2 Bedrooms



40ft x 20ft, 2 Bedrooms



40ft x 20ft, 2 Bedrooms (centre lounge)



42ft x 20ft, 3 Bedrooms



46ft x 20ft, 4 Bedrooms



Scan the QR code
to explore the *Parkview*



THE Faraday

THE PERFECT STARTER LODGE



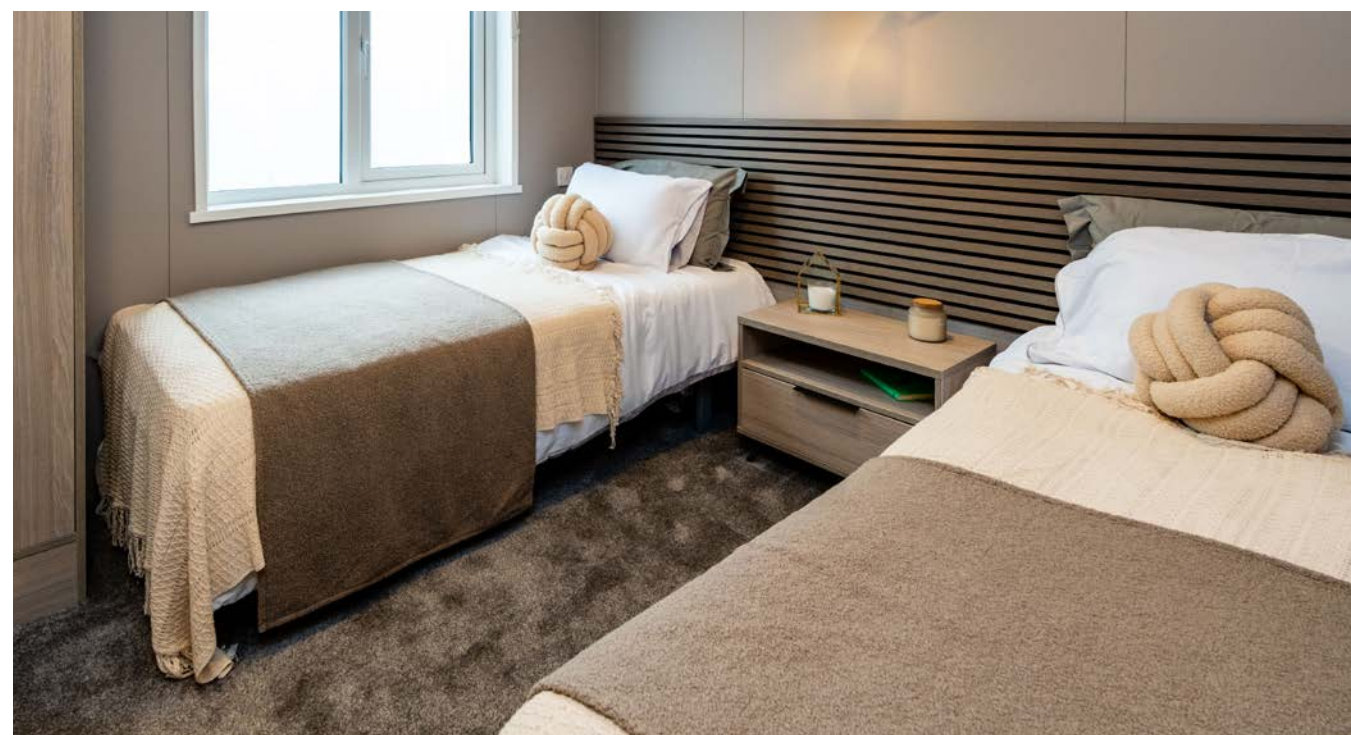
The perfect starter lodge with an expensive feel, the Faraday is the epitome of hygge (pronounced hu-gue) - which is Danish for 'mood of cosiness and comfort and feelings of wellness and contentment'.

 4 Layouts  2-4 Bedrooms  Sleeps 6-10

With calming, warm furnishings and textures throughout, you can spend your evenings relaxing by the fire on the clever modular sofa or cooking up a storm in the kitchen. The kitchen has been designed as a social space, with plenty of seating and worktop space to entertain the family or put your baking skills to the test. The large dining table means you can enjoy holiday meals together or get the board games out for games night.

If you're looking for pure escapism, you've found it.





Key features

- ✓ Contemporary freestanding lounge furniture
- ✓ Two- to four-bedroom models available
- ✓ BS3632 Residential Specification as standard
- ✓ Bath to main bathroom
- ✓ Large kitchen space with breakfast bar
- ✓ Utility room with storage and seating

LODGE

Throughout, you'll see hints of black accents to give the home a boutique, modern feel. And with a 4-bed version available, there's room for all your family and friends.

The layouts

30ft x 20ft, 2 Bedrooms



40ft x 20ft, 2 Bedrooms



42ft x 20ft, 3 Bedrooms



46ft x 20ft, 4 Bedrooms



Scan the QR code
to explore the *Faraday*



THE Highcroft



A warm welcome to the Highcroft, our new 2025 lodge that showcases farmhouse-chic with a modern twist.

 4 Layouts  2-4 Bedrooms  Sleeps 6-10

A lodge made for socialising; the Highcroft combines open plan living with cosy nooks to enjoy peaceful moments. With ambient lighting, a bar area made for cocktails, and large customisable modular sofa, the Highcroft allows you to connect with those that matter.

The large utility space with seating & storage allows you to kick off your wellies or clean up mucky paws without worrying about the mess. What's more, the master bedroom has dim-out curtains for a restful night's sleep because what are Sundays without a lie-in?





Key features

- ✓ Contemporary freestanding lounge furniture
- ✓ Two- to four-bedroom models available
- ✓ BS3632 Residential Specification as standard
- ✓ Bath to main bathroom
- ✓ Large kitchen space with breakfast bar
- ✓ Utility room with storage and seating

LODGE

From girly getaways to family adventures – we've got you covered.

The layouts

30ft x 20ft, 2 Bedrooms



40ft x 20ft, 2 Bedrooms



42ft x 20ft, 3 Bedrooms



46ft x 20ft, 4 Bedrooms



Scan the QR code
to explore the *Highcroft*



THE Liberte



Say hello to our new entry level lodge – the Liberte – new for 2025. If you're looking for a comfortable lodge with space for all the family, the Liberte is the lodge for you.

 1 Layouts  2 Bedrooms  Sleeps 6-10

We know that life happens so we designed the Liberte to have everything you want, and didn't know you needed, so you can drop your suitcases off and relax. From the open plan, free flowing living space, to the customisable guest bedroom. From the full-size bath to the practical storage solutions. The Liberte has it all without the price tag.

Need help choosing?

Book a tour of our showgrounds to see, touch and feel our homes.





Whether you want to host, nap, or primp and preen – there's space to do it all. The *Liberte* is more than a lodge – it's your new home from home.

The layout

40ft x 20ft, 2 Bedrooms



3 bedroom model coming soon...

Key features

- ✓ Contemporary freestanding lounge furniture
- ✓ Spacious kitchen with social dining space
- ✓ BS3632 Residential Specification as standard
- ✓ Twin bed or king size bed to guest bedroom
- ✓ Utility space with seating and storage
- ✓ King size bed to master bedroom

Scan the QR code
to explore the *Liberte*



Looking for a *luxury* glamping retreat?

WHY NOT TRY OUR COMPACT POD

THE Lumiere

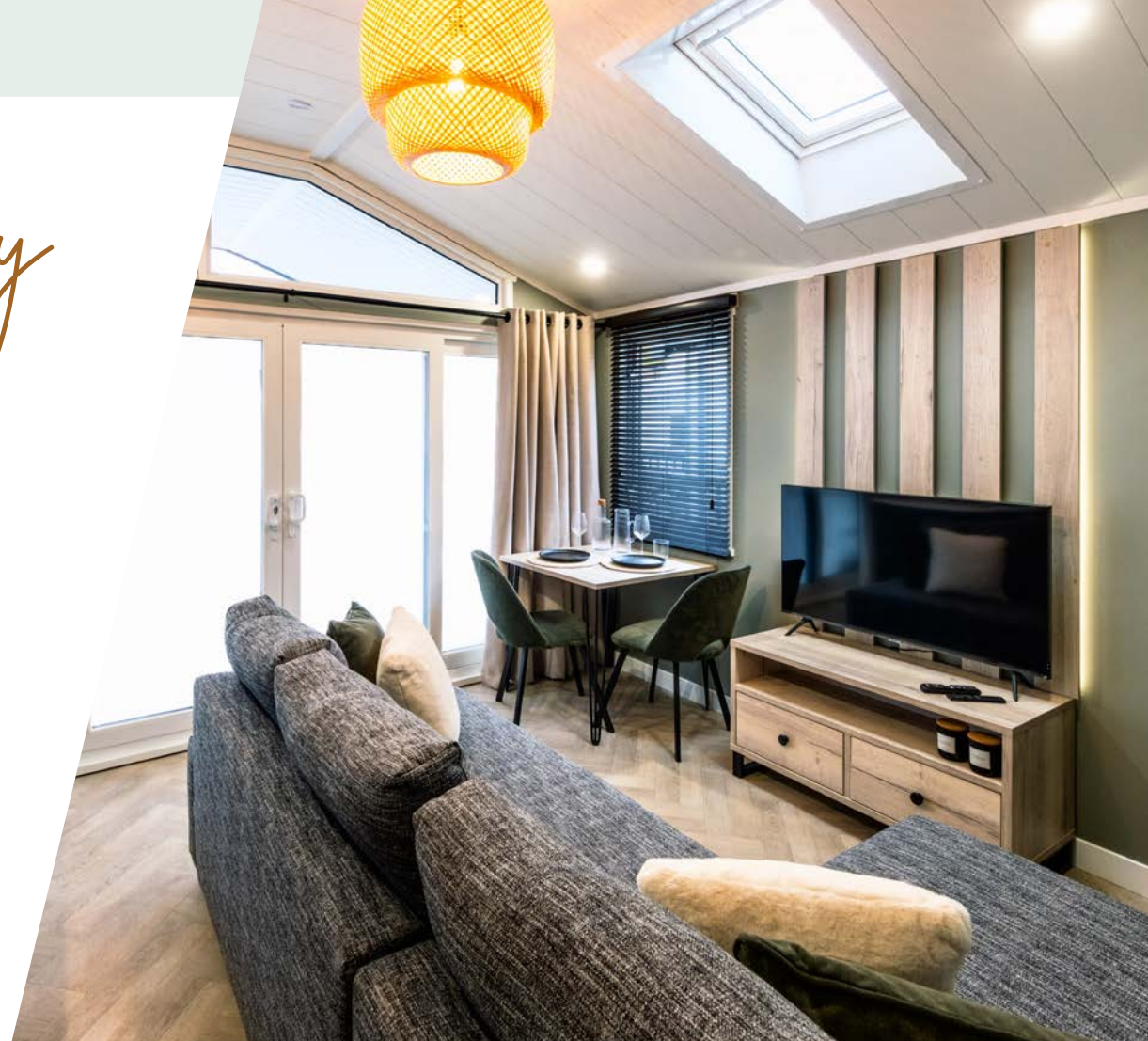
Designed to offer a couples' unique boutique experience, the Lumiere is a new one-bedroom luxury glamping retreat that also offers landowners a unique proposition for holidays.

 1 Bedroom  Sleeps 4

Perfect for a weekend getaway, the Lumiere offers the same Victory style and quality, in a unique way. With a kitchen built for quick meals, a lounge designed for a night of relaxation, and a bedroom made for snoozing. You've got everything you need in the Lumiere. Plus, the integrated deck means you can gaze at the stars all night long...

See more?

Scan the QR code to explore the Lumiere



VISIT OUR
SHOWGROUNDS

Whether you're a first-time buyer, seasoned holiday home owner, or trade customer, our showgrounds are the perfect place to find your next Victory. Our teams are waiting to answer your questions and show you around.

EAST YORKSHIRE (HU15)

Monday - Friday, appointment only

SOMERSET (TA9)

7 days a week, appointment only

Book your
appointment



Scan here
to book an
appointment

JOIN THE
VICTORY
Family

Your holiday home is more than a destination, it's a place in your heart. Memories that will last are made and shared here.

Join the Victory Family and make your holiday, home.



JUST SOME OF THE
BENEFITS YOU'LL ENJOY



Chat with other Victory owners and share tips and advice



Be among the first to meet our new additions to the family



Get a unique family pack with the essentials you need to make your holiday, home



Share your Victory memories with us on social media

Features & Options

Here's a quick snapshot of what features and options are available in our homes.

	HOLIDAY HOMES										POD	LODGES					
	Ashberry	Silver-	Baywood	Stone-	Bronte	Lochwood	Bower	Riverwood	Davenport	Lakewood	Kahlo	Lumiere	Liberte	Faraday	Highcroft	Parkview	Franklin
STRUCTURE / INTERIOR																	
Galvanised chassis	O	O	O	O	O	O	O	✓	✓	✓	✓	✓	O	✓	✓	✓	✓
Trace heating	X	X	X	X	X	X	X	O	O	O	O	X	O	O	O	O	O
BS3632 Residential Specification	X	X	X	X	X	X	X	O	O	O	✓	X	✓	✓	✓	✓	✓
Front french doors	O	O	X	O*	O	O	O	✓	✓	✓	X	X	X	X	X	X	✓
Front single door	O	X	O	O*	X	X	X	X	X	X	X	X	X	X	X	X	X
Front sliding patio doors to lounge	O	O	X	O*	O	O	O	O	O	O	✓	✓	O	O	O	O	X
Front sliding patio doors to dining area	X	X	X	X	X	X	X	X	X	X	X	X	✓	✓	✓	✓	X
Aluminium cladding	✓	✓	✓	✓	✓	✓	✓	✓	✓	✓	X	X	X	X	X	X	X
Canexel cladding	O	O	O	O	O	O	O	O	O	✓	O	O*	O	O	O	O	✓
Artefoam cladding	O	O	O	O	O	O	O	O^	O^	O^	✓	✓	✓	✓	✓	✓	✓
White uPVC glazing	✓	✓	✓	✓	✓	✓	✓	✓	✓	O	O	O	✓	✓	✓	✓	X
Coloured uPVC glazing	O	O	O	O	O	O	O	O	O	✓	✓	✓	O	O	O	O	✓
Voiles to windows	O	O	O	O	O	O	O	O	O	O	O	O	O	O	O	O	O
LOUNGE																	
Freestanding seating**	X	O	X	X	X	✓	✓	✓	✓	✓	✓	✓	✓	✓	✓	✓	✓
Air bed with electric pump	X	✓	✓	✓	X	✓	✓	✓	✓	✓	✓	X	O	✓	✓	✓	✓
Coffee table	✓	✓	✓	✓	✓	✓	✓	✓	✓	✓	✓	X	✓	✓	✓	✓	✓
Integrated Bluetooth sound system	O	O	O	O	O	O	O	O	O	O	O	O	O	O	O	O	O
Electric fire	O	O	O	✓	O	✓	✓	✓	✓	✓	X	✓	O	✓	✓	✓	✓
KITCHEN																	
Fridge/freezer (freestanding or integrated)	✓	✓	✓	✓	✓	✓	✓	✓	✓	✓	✓	✓	✓	✓	✓	✓	✓
Integrated microwave	O	O	O	O	✓	✓	✓	✓	✓	✓	✓	✓	O	✓	✓	✓	✓
Washer/dryer (freestanding or standalone)	O*	O	O*	O*	O*	O*	O*	O*	O*	O*	O	X	O	O*	O*	O*	O
Integrated dishwasher	O*	O	O*	O*	O*	O*	O*	O*	O*	✓	✓	✓	O	O	O	✓	✓
Boiling hot water tap	X	X	X	X	X	X	X	X	X	X	O	X	X	X	X	X	O
Velux window	X	X	O	O	O	X	O	O	O	O	O	O	O	O	O	✓	✓
Separate utility room	X	X	X	X	X	X	X	X	X	X	X	X	✓	✓*	✓*	✓*	✓
MAIN BEDROOM																	
Lift up storage bed	X	X	O	O	O	✓	X	✓	✓	✓	✓	✓	O	O	O	✓	X
King size bed	X	X	✓*	✓*	✓*	✓	✓	✓	✓	✓	✓	✓	✓	✓	✓	✓	✓
Double bed	✓	✓	✓*	✓*	✓*	X	X	X	X	X	X	✓	X	X	X	X	X
Walk-in wardrobe	X	X	X	X	X	X	X	✓	✓	✓	✓	X	X	X	X	X	X
Chest of drawers	X	X	X	X	✓	X	✓	✓	✓	✓	X	X	X	✓	✓	✓*	X
Dressing table	✓	✓	X	✓	✓	✓	X	✓	✓	✓	✓	✓	✓	✓	✓	✓*	✓
Velux window	X	X	X	O	O	O	X	O	O	X	O	X	O	O	O	O	O
French / sliding doors	X	X	X	X	X	X	X	X	X	O	O	X	X	X	X	X	O
Deluxe bedding pack	O	O	O	O	O	O	O	O	O	O	O	O	O	O	O	O	O
TWIN BEDROOM																	
3ft single beds	X	X	✓*	✓*	X	X	✓*	✓*	✓*	✓*	O	N/A	✓	✓	✓	✓*	✓
Office to replace twin bedroom	X	X	X	X	X	X	X	X	X	X	O	N/A	X	X	X	X	X
BATHROOMS / ENSUITE																	
Bath in main bathroom	X	X	X	X	X	X	✓	X	X	X	✓	✓	✓	✓	✓	✓*	X
Bath in ensuite	X	X	X	X	X	X	X	X	X	X	X	X	X	X	X	O*	✓
Velux window	X	X	X	X	X	X	X	X	X	✓	X	X	X	X	X	X	✓
Ensuite extractor fan	O	O	O*	O*	O	✓	✓	✓	✓	✓	✓	✓	✓	✓*	✓*	✓*	✓

X Not available on this model
O Optional extra

✓ Standard feature
* Depends on size / other option choices

** Sizing may change depending on layout
^ BS3632 residential spec only



Say hello to... The staycation of the future

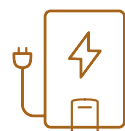
DISCOVER OUR OPTIONAL ECO EXTRAS

We've developed eco and smart option packs for our range*, including the Lumiere. From solar panels to smart lighting and all-electric heating, our options bring you closer to a sustainable staycation.



Solar panels

Save on energy bills with our 10-panel 4kW solar system and battery. Monitor your generation and savings with our app. What's more, we can fit solar panels to your existing holiday home**.



Electric boiler

Our 99% efficient electric boiler heats your existing wet central heating system and is programmable by an app or thermostat. Say goodbye to gas bottles!



Sunamp water heater

Offering hot water at mains pressure, our water heaters heats 128 litres of water in 2.5 hours which gives you instant hot water, even in a power cut. Plus – once charged, you'll get 10 days of hot water.



Origin smart packs

Gain complete control of your home with our smart packs designed to detect leaks and fire, security warnings, and even Legionella alerts.



Kelda Bubble Spa shower

Save up to £1100 in energy costs with the Kelda BubbleSpa which uses water and compressed air to give the feeling of a power shower – without using lots of water.



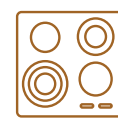
Heat recovery system

This extracts warm air, passes it over a heat exchanger, and vents it outside. Cool, fresh air is then filtered, warmed via the exchanger, and pumped back in. This reduces heat loss and lowers your energy costs.



Kinetic lighting

Imagine being able to turn a light switch on or off from anywhere in your home. Say hello to our kinetic lighting that offers complete flexibility and control of your lighting.



Cooking appliances

Our induction hobs and electric ovens eliminate the need for gas bottles, and if you add our solar panel system you'll even use less electricity from the grid.

*Model dependent ** Subject to a full home survey

Interested in finding out more? Book a visit to our showground to speak to one of our experts.

Your warranty

We want to give you peace of mind when you purchase a Victory holiday home or lodge.

When you get the keys to your new home, you'll receive a comprehensive 12-month warranty from the date of ownership. We also offer an enhanced warranty on the items specified here.*

*Terms and conditions apply

3
YEAR

We provide an additional 2 years' warranty cover (after the initial 12 months) if a manufacturing defect occurs on the following items:

- Victory manufactured fitted furniture
- Soft furnishings, plus seating including upholstery and dining table
- Kitchen sink
- Radiators
- Shower cubicle and shower door
- Sanitaryware, bath and taps
- Sockets and switches
- Internal doors and handles
- Gutters and downpipes
- Cladding*
- Boiler**

* Cladding warranty is subject to the type of cladding used on your home.

** Please refer to your boiler manual. The boiler warranty must be registered within 30 days of commissioning and be serviced annually by a Gas Safe engineer. Boiler warranty may vary depending on where the holiday home is sited.

5
YEAR

The structural components listed below are entitled to an additional four years warranty cover after the initial 12 months.

- External doors and PVCu windows
- Roof, walls, and ceilings
- Flooring*

* Subject to home usage i.e. residential or hire fleet

10
YEAR

Fully galvanised steel chassis receive an anti-corrosion warranty* of 10 years from the date of manufacture. The structural warranty is 15 years from the date of chassis manufacture.

Painted steel chassis receive an anticorrosion warranty of 2 years from the date of manufacture.** The structural warranty is 5 years from the date of chassis manufacture.

* The anti-corrosion warranty covers the perforation of the steel components such that the structural integrity of the home is compromised, and does not cover cosmetic anomalies including the appearance of surface rust. Annual maintenance regimes should be followed in accordance with the Victory Owners Handbook in your home.

** Painted chassis located within coastal areas, will require quarterly checks and may possibly need periodic work to be carried out.

Warranty scheme effective on holiday homes and lodges at date of purchase. The scheme is applicable to the first home owner only, whilst sited on its original plot.



Victoria House, Leads Road, Hull, HU7 0BZ
Call: 01482 386600 | Email: sales@victoryleisurehomes.co.uk
victoryleisurehomes.co.uk

This brochure is designed to provide an illustrative representation of our homes. Some colours may be affected in digital print. All features correct at time of issue (August 2024) but are subject to change - the most up to date product specifications can be found on our website